

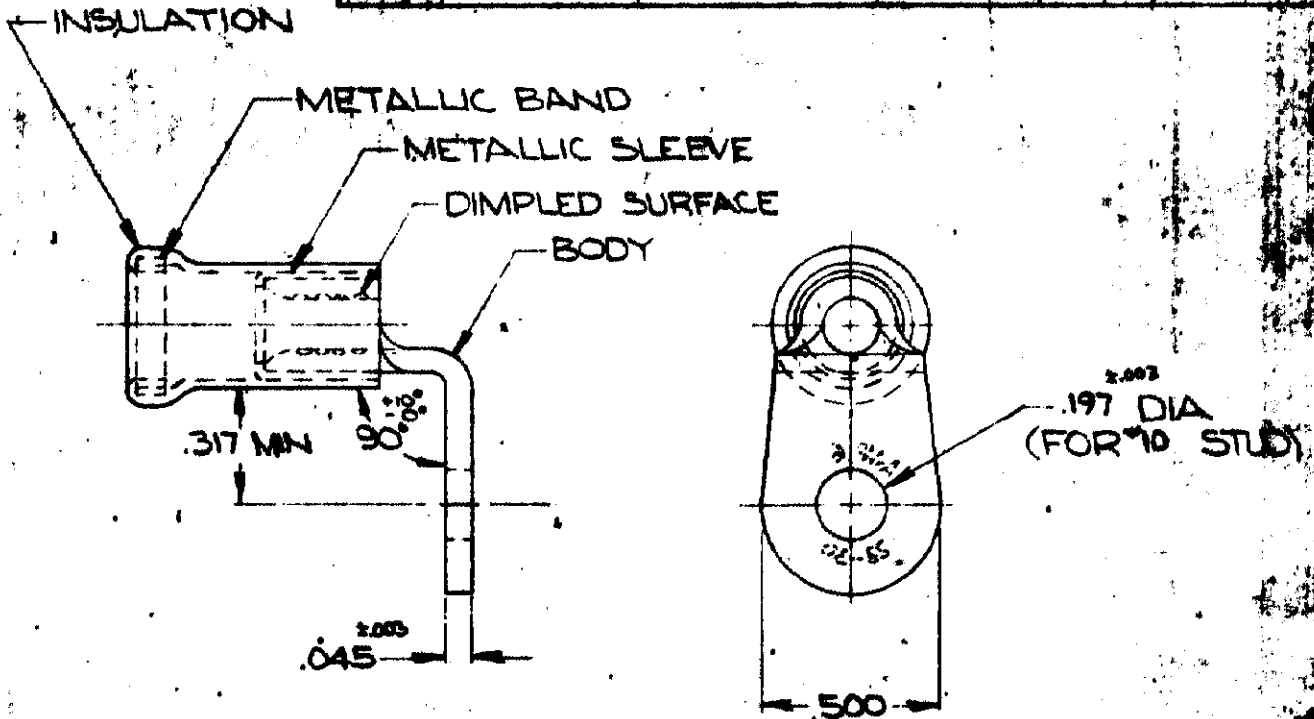
MADE IN AMERICAN PROJECTION

G *(Signature)*

BY AMP INCORPORATED. ALL RIGHTS RESERVED. AMP PRODUCTS COVERED BY PATENTS AND/OR TRADE MARKS PENDING.

REVISIONS

LTR	DESCRIPTION	DATE	APPROVED
B	REDRAW & REVISED R-8563	1-5-70	<i>(Signature)</i>
C	REV 8-1480	5-5-80	JT



FOR .317 MAX WIRE INS. DIA

WIRE TERMINAL	322887	BODY: COPPER (QQ-C-576)	
		TIN PL (MIL-T-10727)	
		INSULATION: PVC COLOR: BLUE	
		METALLIC SLEEVE: COPPER (QQ-C-576)	
		METALLIC BAND: STEEL (ASTM A109) QQ-S-698	
QTY	DESCRIPTION	PART NO.	MATERIAL & FINISH

UNLESS OTHERWISE SPECIFIED DIMENSIONS ARE IN INCHES
 TOLERANCES ON:
 DECIMALS ± .008
 ANGLES ± 5°
 MATERIAL
 SEE TABLE

CONTRACT NO.	
DR.	<i>(Signature)</i> 11-10-69
CHK	<i>(Signature)</i> 1-5-70
APPD	<i>(Signature)</i> 1-6-70
REV	<i>(Signature)</i> 1-7-70
DSGN APPD	<i>(Signature)</i>

AMP		AMP INCORPORATED HARRISBURG, PENNSYLVANIA
NAME WIRE TERMINAL AMPLI-BOND-RING TONGUE-BENT 90° WIRE SIZE: #6		
SIZE	CODE IDENT NO.	NUMBER
A	00779	322887